

Measure Researcher and
Team Performance Using
Customizable Indicators

SciVal Strata

Unlock the promise of your research

The Challenge: Objectively measure and benchmark the performance of research teams and individuals

Research demands objective measurement and modeling. Shouldn't you apply the same standards to researcher teams and resources?

For decision-makers responsible for institutional performance, the promises of research are tempered by an acute need for accountability.

Institutional leaders, administrators, research managers and researchers themselves need an objective means for evaluating strengths, assembling productive teams, and allocating a vast array of resources, from personnel to equipment, supplies, space and more.

SciVal Strata is a research performance visualization tool, designed in collaboration with research managers and other institutional authorities, that helps decision makers:

- Evaluate team performance across a flexible spectrum of benchmarks and measures
- Allocate resources by individuals, teams and departments
- Apply a wide variety of research indicators to assess return-on-investment
- Model collaborative networks and what-if scenarios for cross-disciplinary and/or multi-national research
- Export and share findings with other stakeholders
- Make informed decisions regarding recruitment, retention and promotion

Part of the SciVal® suite of performance management tools

SciVal Strata is the indicator analytics component of SciVal, an integrated suite of objective administration tools that helps decision-makers create, evaluate and maximize the reach and value of their institutions' research investments.

SciVal Strata is available as part of the SciVal suite or by independent subscription.

“You need to demonstrate that you are performing very well, and need more money and support – how can you make the case?”

Group Leader



The Solution: Flexible and far-reaching, SciVal Strata brings research performance into clear view

A highly flexible, web-based tool, SciVal Strata leverages the Scopus dataset – the largest citation database available anywhere – to open up customizable views into crucial areas of research performance.

Drag-and-drop evaluations

Users can simply drag and drop individual researchers, research teams or even team hierarchies into graphs that demonstrate relative levels of performance by a variety of measures.

Assemble dream teams

By assembling data on disciplinary reach, SciVal Strata helps administrators model prospective research teams formed across area of inquiry and international regions.

Customizable fields

SciVal Strata comes preloaded with an exhaustive list of Subject Categories that can be combined or rebuilt by users to their exact needs.

Flexible criteria

With SciVal Strata, decision makers can make objective assessments of individual and team performance through a broad range of research indicators including publication output, citations, and collaborative activity.*

Sharing options

Institutions can set the rules for sharing data within their organizations or the broader SciVal Strata community.

Crucial at multiple levels. SciVal Strata helps individuals fulfill various responsibilities throughout the institution:

Responsibility	SciVal Strata strength
Recruit talent	<ul style="list-style-type: none"> ● Assess potential collaborators ● Identify high-performers
Allocate resources	<ul style="list-style-type: none"> ● Target areas of research strength ● Compare performance of individuals and teams
Expand research efforts	<ul style="list-style-type: none"> ● Visualize geographic and network reach of researchers* ● Locate talent by discipline, area
Justify decisions	<ul style="list-style-type: none"> ● Customize objective benchmarks ● Share and/or import teams and fields with colleagues
Identify research opportunities	<ul style="list-style-type: none"> ● Evaluate performance leaders ● Model speculative teams

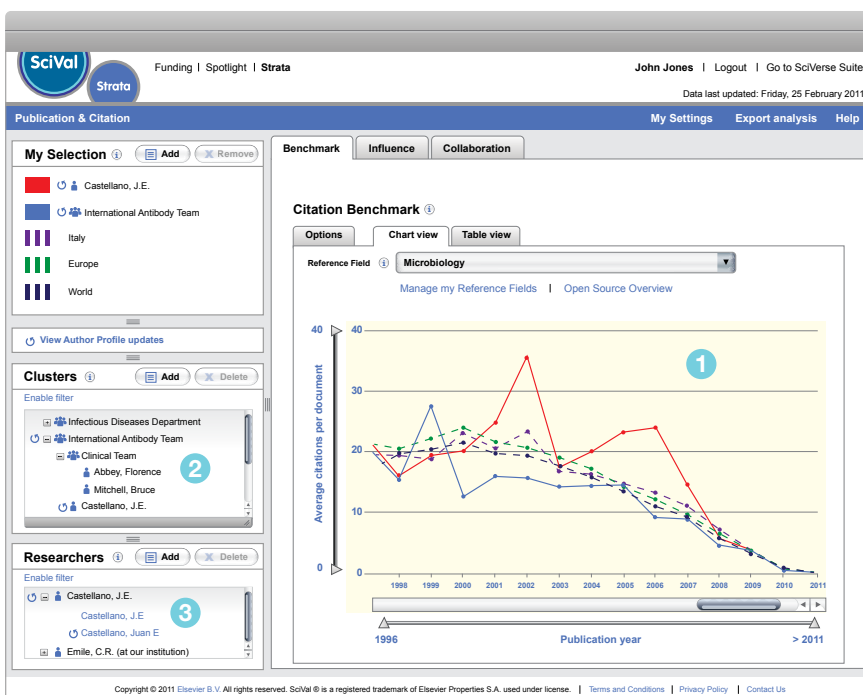
“Finding new faculty members is the highest priority issue on the administrative agenda. This would allow you to do real due diligence, not just rely on the old boys network.”

Head of Department

*Available Q3 2011

“You could put in researchers from all streams of a Centre of Excellence...that’s fantastic!”

Manager, Research Development



See the talent you choose by the benchmarks that matter

SciVal Strata’s intuitive interface makes it easy to compare individual and team performance within a context you can adjust to your needs.

1 At a glance, SciVal Strata graphically reveals performance in Reference Fields you can modify, along time periods you can adjust.

2 Assemble teams, real or speculative, to measure productivity and potential.

3 By integrating multiple Author Profiles into one researcher, you see a complete picture of performance.

About the Scopus® data set

The Scopus data set is a trusted source of citation and abstracting information with the most comprehensive coverage of peer-reviewed literature and quality web sources in the world, used by 70% of

the world’s top 20 universities*. It uses a powerful, multi-faceted and highly accurate algorithm to pre-group individual documents into Author Profiles. SciVal Strata allows you to group the Author Profiles

of virtually any researcher you are interested in, ensuring complete coverage of their output when you are using the researcher to build teams and evaluate research performance.

*U.S. News & World Report’s World’s Best Universities, 2010.

Fair, flexible and far-reaching:

SciVal Strata brings research performance into clear view



Measure impact through multiple perspectives

Under the Influence tab, users can evaluate teams not just by raw productivity, but by their impact on other researchers and consumers of scientific information.

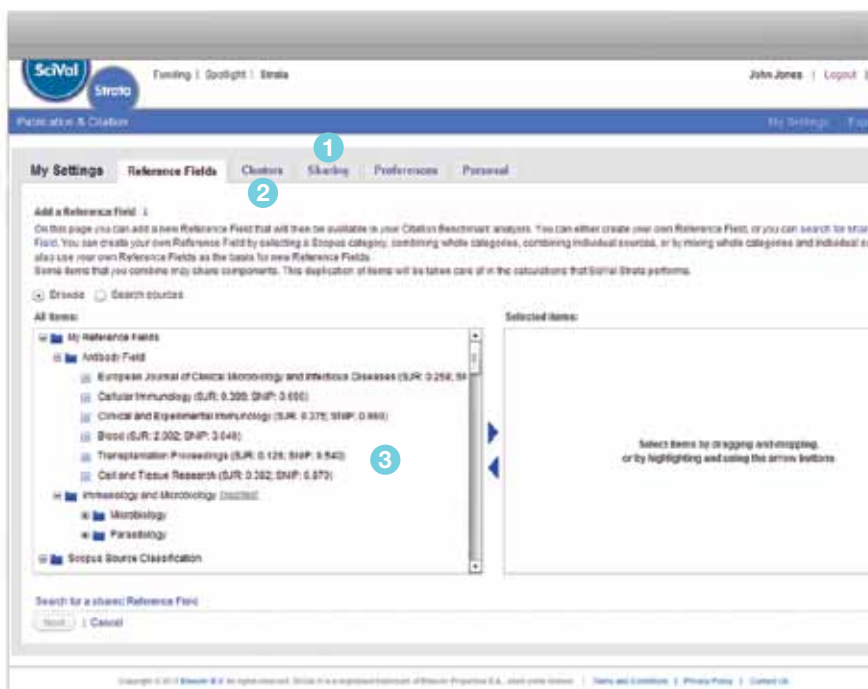
1 You can visualize influence by numerous customizable variables: *h*- and *g*- indices, document output, and citation statistics.

2 Visual displays expose researcher and/or research team impact trends over time.

3 SciVal Strata's data set reaches from 1996 and extends through regular updates right up to the current week.

“There is no such thing as ‘the’ right methodology. I want a tool that allows me to twist and play with as many parameters as possible to adjust the analysis to current purposes.”

Head of Research & Analysis Unit, National Funding Agency



Customize settings to your needs

Through the My Settings tab, users can personalize their Strata experience to exclude or include self-citations, customize Reference Fields and clusters, set defaults for the time span on which they view charts and much more.

1 You may share your teams and Reference Fields with your institutional colleagues or the world of SciVal Strata users.

2 Managing teams is as simple as dragging-and-dropping researchers or even teams you have already created into new groupings.

3 You can use or modify pre-existing Subject Categories, or create Reference Fields of your own with sources of your choice.

For more information about our SciVal suite of products, please contact your nearest Elsevier Regional Sales Office.

Asia and Australia

Tel: +65 6 349 0222

Fax: +65 6 733 1050

Email: sginfo@elsevier.com

Europe, Middle East and Africa

Tel: +31 20 485 3767

Fax: +31 20 485 3432

Email: nlinfo@elsevier.com

Japan

Tel: +81 3 5561 5034

Fax: +81 3 5561 5047

Email: jpinfo@elsevier.com

Korea

Tel: +82 2 6714 3000

Fax: +82 2 732 8689

Email: krinfo@elsevier.com

North, Central America and Canada

Tel: 1 888 615 4500

Email: usinfo@elsevier.com

South America

Tel: +55 21 3970 9300

Fax: +55 21 2507 1991

Email: brinfo@elsevier.com

SciVal® delivers comprehensive and integrated workflow solutions to help you evaluate, establish and execute your research strategies and performance assessments.

www.scival.com

Copyright© 2011 Elsevier B.V. All rights reserved. SciVal® is a registered trademark of Elsevier Properties S.A., and used under licence.

