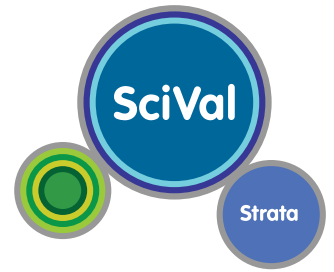
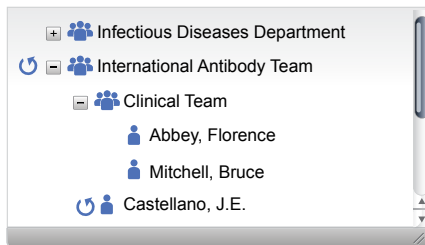


# Introducing SciVal Strata:

Measure Researcher and Team Performance  
Using Customizable Indicators

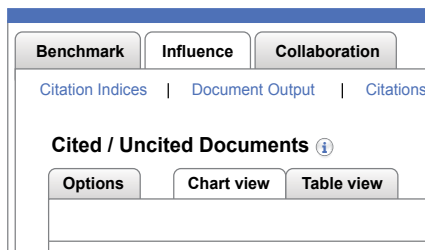


- Evaluate team performance across a flexible spectrum of benchmarks and measures
- Make informed decisions regarding recruitment, retention and promotion
- Model collaborative networks and what-if scenarios for cross-disciplinary and/or multi-national research



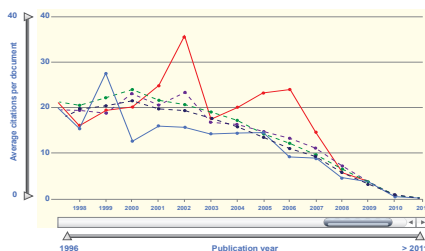
## ▲ Create teams

Assemble teams, real or speculative, to measure productivity and potential.



## ▲ Select indicators

Measure research impact through multiple perspectives.



## ▲ View performance

Compare individual and team performance within a context you can adjust to your needs.

## SciVal Strata delivers...

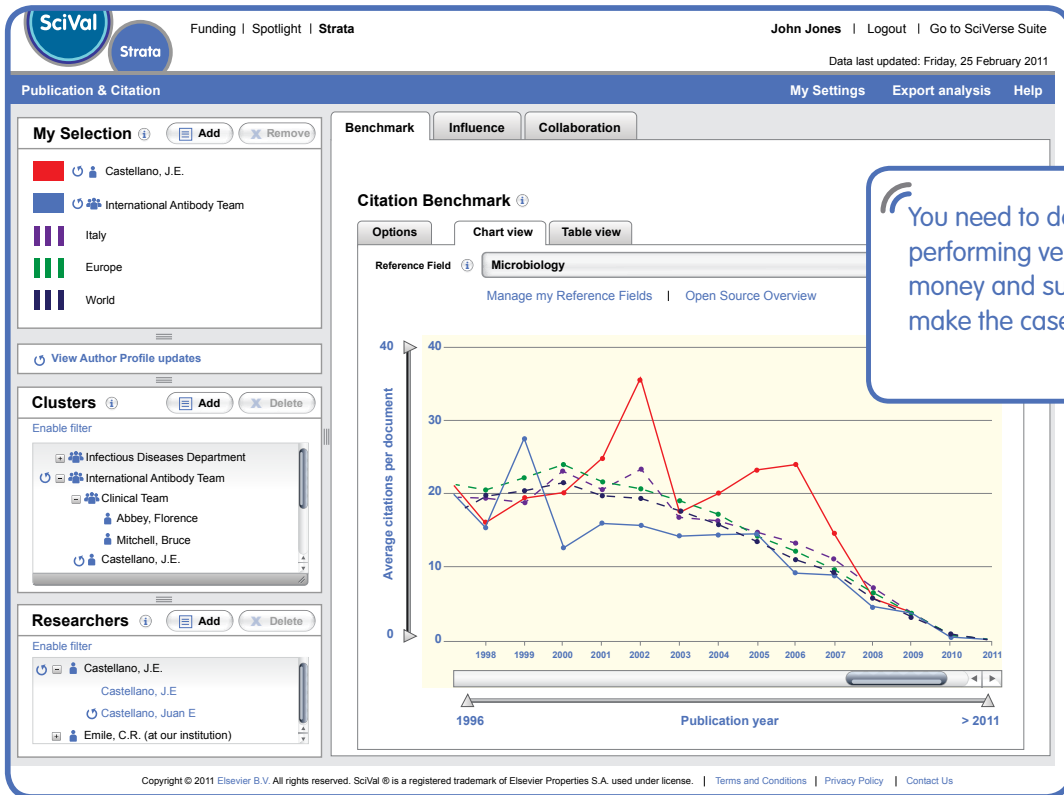
- A highly flexible method of evaluating the performance of researchers and teams
- An intuitive “drag and drop” interface so teams and departments can be easily assembled
- The ability to look up any researcher that has a SciVerse® Scopus® profile
- Analyses across multiple indicators, including citation benchmarks, document output and citation indices
- The ability to export and share findings with other stakeholders
- Customizable subject categories

“You could put in researchers from all streams of a Centre of Excellence... that’s fantastic!”

Manager,  
Research Development

# The Challenge

Research demands objective measurement and modeling. Shouldn't you apply the same standards to researcher teams and resources?



# The Solution: SciVal Strata

Flexible and far-reaching, SciVal Strata brings research performance into clear view

A highly flexible, web-based tool, SciVal Strata leverages the Scopus dataset – the largest citation database available anywhere – to open up customizable views into crucial areas of research performance.

## Drag-and-drop evaluations

Users can simply drag and drop individual researchers, research teams or even team hierarchies into graphs that demonstrate relative levels of performance by a variety of measures.

## Assemble dream teams

By assembling data on disciplinary reach, SciVal Strata helps administrators model prospective research teams formed across area of inquiry and international regions.

## Customizable fields

SciVal Strata comes preloaded with an exhaustive list of Subject Categories that can be combined or rebuilt by users to their exact needs.

If you have any questions regarding **SciVal Strata**, please visit [www.info.scival.com/strata](http://www.info.scival.com/strata) or contact:



Asia and Australia:  
[sginfo@elsevier.com](mailto:sginfo@elsevier.com)

Europe, Middle East and Africa:  
[nlinfo@elsevier.com](mailto:nlinfo@elsevier.com)

Japan:  
[jpinfo@elsevier.com](mailto:jpinfo@elsevier.com)

Korea:  
[krinfo@elsevier.com](mailto:krinfo@elsevier.com)

North, Central America and Canada:  
[usinfo@elsevier.com](mailto:usinfo@elsevier.com)

South America:  
[brinfo@elsevier.com](mailto:brinfo@elsevier.com)

